

# Best Practices

## SEWA (Social Engagement & Welfare Activities)

### Motivation behind SEWA



The message **Back to Village** conveyed by **Hon'ble Prime Minister Shri. Narendra Modi** in Mann Ki Baat (28th July 2019) has inspired the University in formalizing "**SEWA**"



**Hon'ble Chancellor Smt. Anandiben Patel** carried this message forward and encouraged the University students to visit local <sup>Bmisha</sup> community and work at grass root level of the society. This is the major theme of SEWA (01.03.2023)



## Motivation behind SEWA



Distribution of Aanganwadi Kits to Karyakatri's by **Hon'ble Chancellor Smt. Anandiben Patel** in every Convocation of the University has inspired us to provide support to Aanganwadi Kendras through SEWA (01 March 2023)



The Hon'ble Chancellor provides continuous direction and guidance to the academic and administrative staff of the University, resulting in effective conduction of activities under purview of SEWA



# Infrastructural Empowerment of Anganwadi Kendras

## Collection of Anganwadi Kits at the University Campus



Aanganwadi Kits comprising of learning kits, toys, furniture etc. displayed at the University before being distributed to the Aanganwadi Kendras



Collection of Aanganwadi Kits during the Convocation of the University ready for distribution to various Aanganwadi Kendras



# Infrastructural Empowerment of Anganwadi Kendras

## Distribution of Kits to Aaganwadi Kendras



Aanganwadi Kits delivered by the University to Aanganwadi Kendra **Koudiyamau**



Aanganwadi Karyakatri receiving kits delivered by the University to Aanganwadi Kendra **Behta**



# Infrastructural Empowerment of Anganwadi Kendras

## Utilization of Educational Toys at Aaganwadi Kendras



Children of Aanganwadi Kendra, *Kakoli*, using the puzzles and educational toys of Aanganwadi Kits for learning purposes.



Involvement of Karyakatris in utilizing learning tools of Bmisha Aanganwadi Kits in enhancing knowledge of children at in REGISTRAR  
Aanganwadi Kendra, *Diguria* KHWAJA MOINUDDIN CHISHTI  
LANGUAGE UNIVERSITY,  
LUCKNOW



# Infrastructural Empowerment of Anganwadi Kendras

## Utilization of Furniture at Aaganwadi Kendras



Students at Aanganwadi Kendra, *Allu Nagar* seated on chairs distributed as part of Anganwadi kits during a learning session



Children utilizing tables and chairs of kits in Aanganwadi Kendra, *Koudiyamau*



# Outcomes of SEWA

## Infrastructural Empowerment of Anganwadi Kendras



The number of children enrolled in Anganwadi Kendras has **increased significantly** since the distribution of Anganwadi kits and toys by the University



Children engaging and interacting with each other in the *Bmisha* upgraded and updated Anganwadi Kendra at *Shivpuri Mini*

REGISTRAR  
KHWAJA MOINUDDIN CHISHTI  
LANGUAGE UNIVERSITY,  
LUCKNOW



# Outcomes of SEWA

## Infrastructural Empowerment of Anganwadi Kendras



Under the continuous guidance of **Hon'ble Chancellor Smt. Anandiben Patel**, the University received Certificate of Appreciation for facilitating Aaganwadi Kendras with Infrastructural support

REGISTRAR  
KHWAJA MOINUDDIN CHISHTI  
LANGUAGE UNIVERSITY,  
LUCKNOW



# Outcomes of SEWA

## Infrastructural Empowerment of Anganwadi Kendras



**Hon'ble Chancellor Smt. Anandiben Patel**, distributing items from the Anganwadi Kits during the Convocation of University



**ख्वाजा मुईनुद्दीन चिश्ती भाषा विश्वविद्यालय, लखनऊ**  
**Khwaja Moinuddin Chishti Language University, Lucknow**



### ऑंगनबाड़ी केन्द्रों के कार्यक्रमों का संशोधित विवरण

क्र०सं०	जिला	ऑंगनबाड़ी केन्द्रों की संख्या जहाँ किट उपलब्ध कराये गये हैं।	किट की संख्या	कुल धनराशि (रु०)
01	लखनऊ	20	20	रु० 06,33,350

विश्वविद्यालय से कोई भी महाविद्यालय सम्बद्ध नहीं है।

Educational items worth Rs. 6,33,350 have been distributed in 20  
Anganwadis by the University



# Health Related Initiatives in Adopted Villages

## Health Related Awareness and Counseling Activities



Volunteers from the University interacting with women living in adopted village *Lokharia* to create awareness related to health and hygiene and collect data regarding health issues



Students of the University discussing about average height and weight of children below five years of age at adopted village *Diguna*



# Health Related Initiatives in Adopted Villages

## Health Related Awareness and Counseling Activities



Girls students of the University taking to adolescent girls living in adopted village *Rahodapurwa* regarding menstrual hygiene



Students of the University discussing harms of open defecation and proper waste management with residents in adopted village *Rahodapurwa*



# Health Related Initiatives in Adopted Villages

## BMI Checkup Camps



Regular BMI checkup of women & children is done in adopted village *Diguria*



BMI Calculation camp organized in adopted Village *Lokharia* Omisha  
assess the health status of women



# Health Related Initiatives in Adopted Villages

## Health Checkup Camps



Health Camps organized in adopted village *Lokharia* to address the health issues of the residents in collaboration with Dr. Amar Shukla (M.B.B.S.)



A team of doctors conducting Health Camp at adopted village *Lokharia*



# Health Related Initiatives in Adopted Villages

## COVID Health Checkup Camps and Distribution of Medicines



COVID testing and Medical Distribution Camp organised in adopted village *Diguria*



Distribution of masks in adopted villages during COVID Awareness Programme of the University



# Health Related Initiatives in Adopted Villages

## Distribution of Nutritious Food Packets



Distribution of food items and other essential commodities by NSS Volunteers in adopted villages during COVID times (19.05.2020)



Distribution of Oil, Rice, Pulses and daily necessities etc. in Bmisha adopted villages during COVID times (19.05.2020)



# Health Related Initiatives in Adopted Villages

## Yoga Shivirs Conducted in Adopted Villages



Children of Aanganwadi Kendra and Primary school *Diguria* involved in Yoga shivir conducted by students of the University

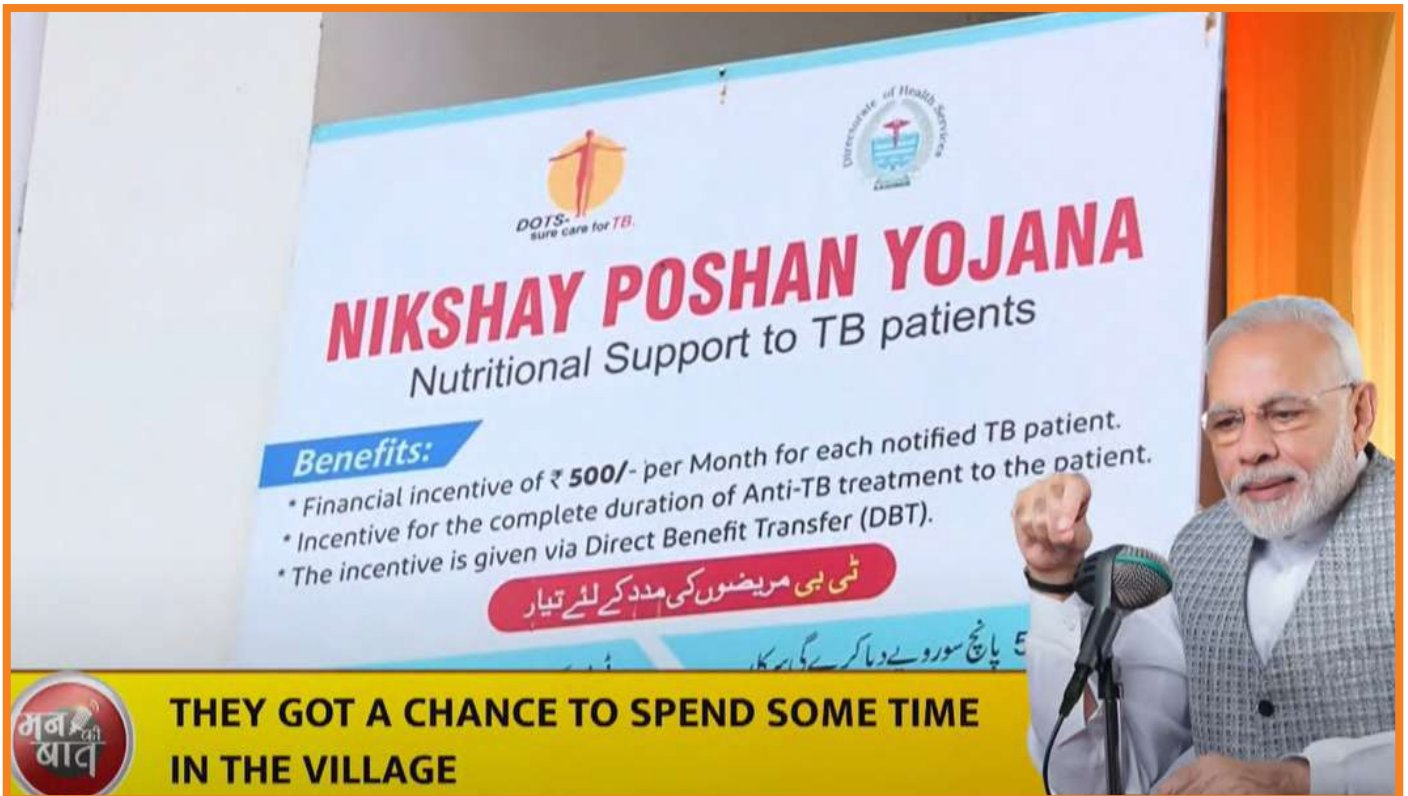


Yoga sessions organized at various locations in adopted villages



# Health Related Initiatives in Adopted Villages

## Distribution of Poshan Potli to T.B. Patients



The scheme of **Nikshay Poshan Yojana** conceived by **Hon'ble Prime Minister Shri. Narendra Modi** in Mann Ki Baat (28th July 2019) has inspired the University to provide nutritional support to T.B. patients



Distribution of **Poshan Potli** by **Hon'ble Chancellor Smt. Anandiben Patel** during Lokarpan Samaroh in the University, taking the vision of Hon'ble Prime Minister forward (07.02.2021)



# Health Related Initiatives in Adopted Villages

## Distribution of Poshan Potli to T.B. Patients



Distribution of **Poshan Potli** to T.B. Patients by **Hon'ble Vice Chancellor Prof. N.B. Singh** on World Tuberculosis Day



Regular monitoring and support provided to T.B. Patients by Omisha  
University faculty members



# Health Related Initiatives in Adopted Villages

## Plantation of Fruit Bearing Trees in Adopted Villages



Faculty members of the University planting fruit bearing trees alongwith women residing in adopted village *Diguria*



Children of adopted village *Rahodapurwa* involved in Plantation Drives of fruit bearing trees



# Outcomes of SEWA

## Health Related Initiatives in Adopted Villages



Distribution of sanitary pads to adolescent girls living in adopted village *Allu Nagar* by University in collaboration with NGO "Women led Science Society" (24.01.2023)

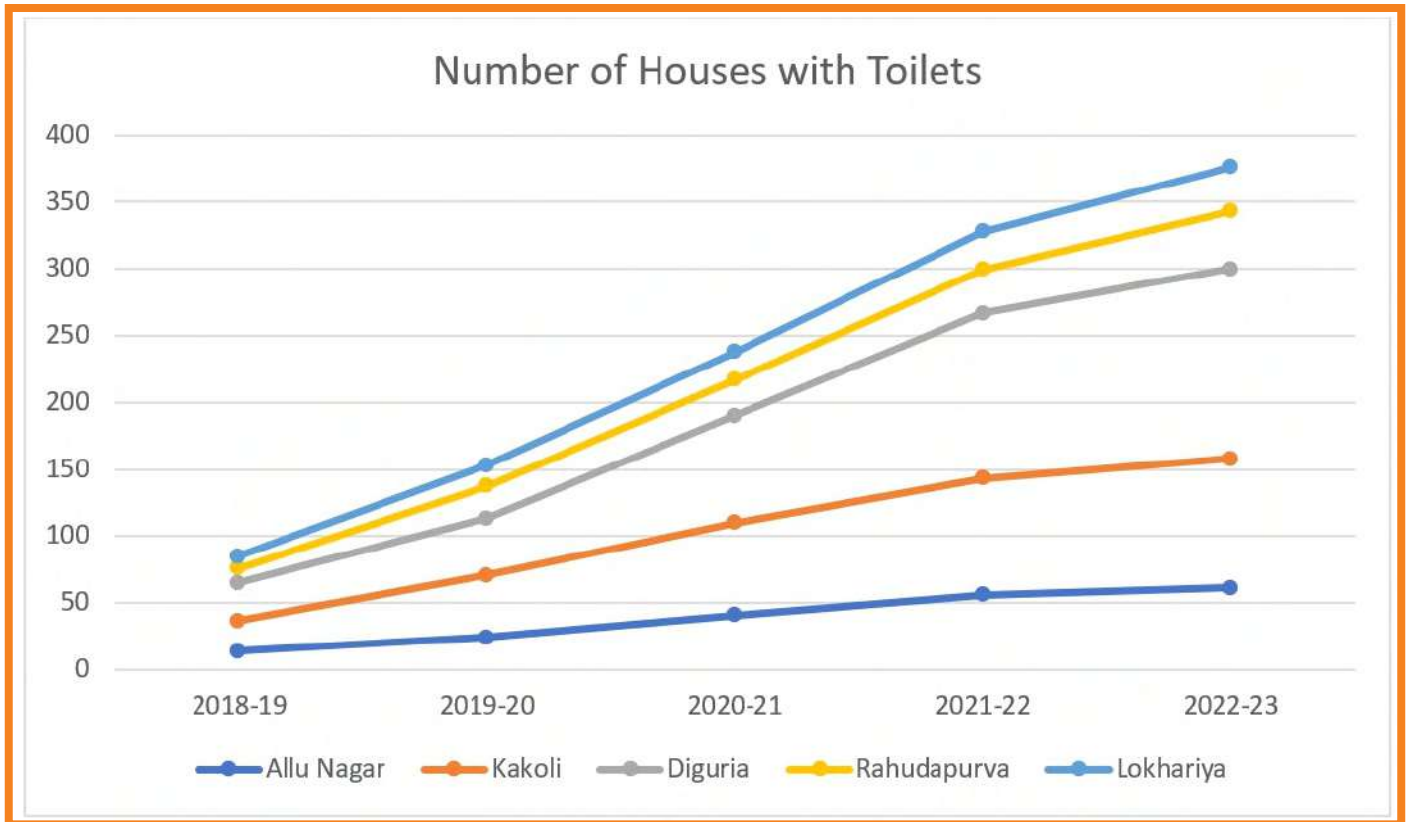


Sanitary Pads are distributed regularly to adolescent girls and women by the University in association with Women-led Science Society (24.01.2023)



# Outcomes of SEWA

## Health Related Initiatives in Adopted Villages



Number of Houses with Toilets in Adopted Villages

*Bmisha*



# Outcomes of SEWA

## Health Related Initiatives in Adopted Villages

*Status of T.B. Patients adopted by the University*

ख़्वाजा मुईनुद्दीन चिश्ती भाषा विश्वविद्यालय, लखनऊ  
Khwaja Moinuddin Chishti Language University, Lucknow

(Uttar Pradesh State Government University)

Status of T.B. Patients adopted by University Date : 23/03/2023

S.No.	Diagnosis Date	Nikshay ID	Year of Adoption	Patient Name	Gender	Adopted by	Condition
1.	04-08-20	14959128	2020	Rashika	Female	Dr. Nalini Mishra Assistant Professor	Recovered
2.	28-08-20	15105891	2020	Tanywa Vishwakarma	Female	Dr. Tanu Dang Assistant Professor	Recovered
3.	01-07-20	14691788	2020	Mahi Saxena	Female	Dr. Nalini Mishra Assistant Professor	Recovered
4.	07-07-20	14780946	2020	Khushboo	Female	Dr. Abdul Hafeez Assistant Professor	Recovered
5.	23-07-20	14887418	2020	Kulsum	Female	Dr. Akmal Shadab Assistant Professor	Recovered
6.	8-05-20	14342960	2020	Nitima Maurya	Female	Dr. Mazhar Khaliq, Assistant Professor	Recovered
7.	07-05-2022	27104330	2022	Prabhat Sharma	Male	Prof. Masood Alam Dean, Faculty of Arts and Humanities	Recovered
8.	07-25-2022	28186479	2022	Sabreen Bano	Female	Prof. Syed Haider Ali, HOD-Business Administration, Director-IAC	Recovered
9.	07-15-2022	28070869	2022	Subhash Prajapati	Male	Prof. Chandana Dey, Dean Faculty of Social Sciences	Recovered
10.	8-4-2022	28377997	2022	Meena Kumari	Female	Prof. Ehtisham Ahmad, Dean Faculty of Commerce	Recovered
11.	8/16/2022	28498271	2022	Somya Bajpai	Female	Prof. Fakhre Alam, H.O.D. Urdu	Recovered
12.	8/11/2022	28372614	2022	Anil Kumar	Male	Prof. Sauban Saeed, Dean Student Welfare	Recovered
13.	9/1/2022	29101871	2022	Mahrin Nisha	Female	Prof. Tanveer Khadija, H.O.D. English	Recovered
14.	9/1/2022	29133295	2022	Mo. Tauseeb Ahmad	Male	Dr. Tather Fatima, Dean Faculty of Sciences	Recovered
15.	9/2/2022	29354341	2022	Bari	Female	Dr. Praveen Kumar Rai, H.O.D. Geography	Recovered

*Bmisha*



# Outcomes of SEWA

## Health Related Initiatives in Adopted Villages

S.N o.	Session	Trees Planted	Trees Survived	Survival Rate
1	2018-19	50	26	52.00
2	2019-20	225	85	37.78
3	2020-21	350	116	33.14
4	2021-22	475	188	39.58
5	2022-23	800	257	32.13

Year-wise Number of Trees Planted in adopted villages of University



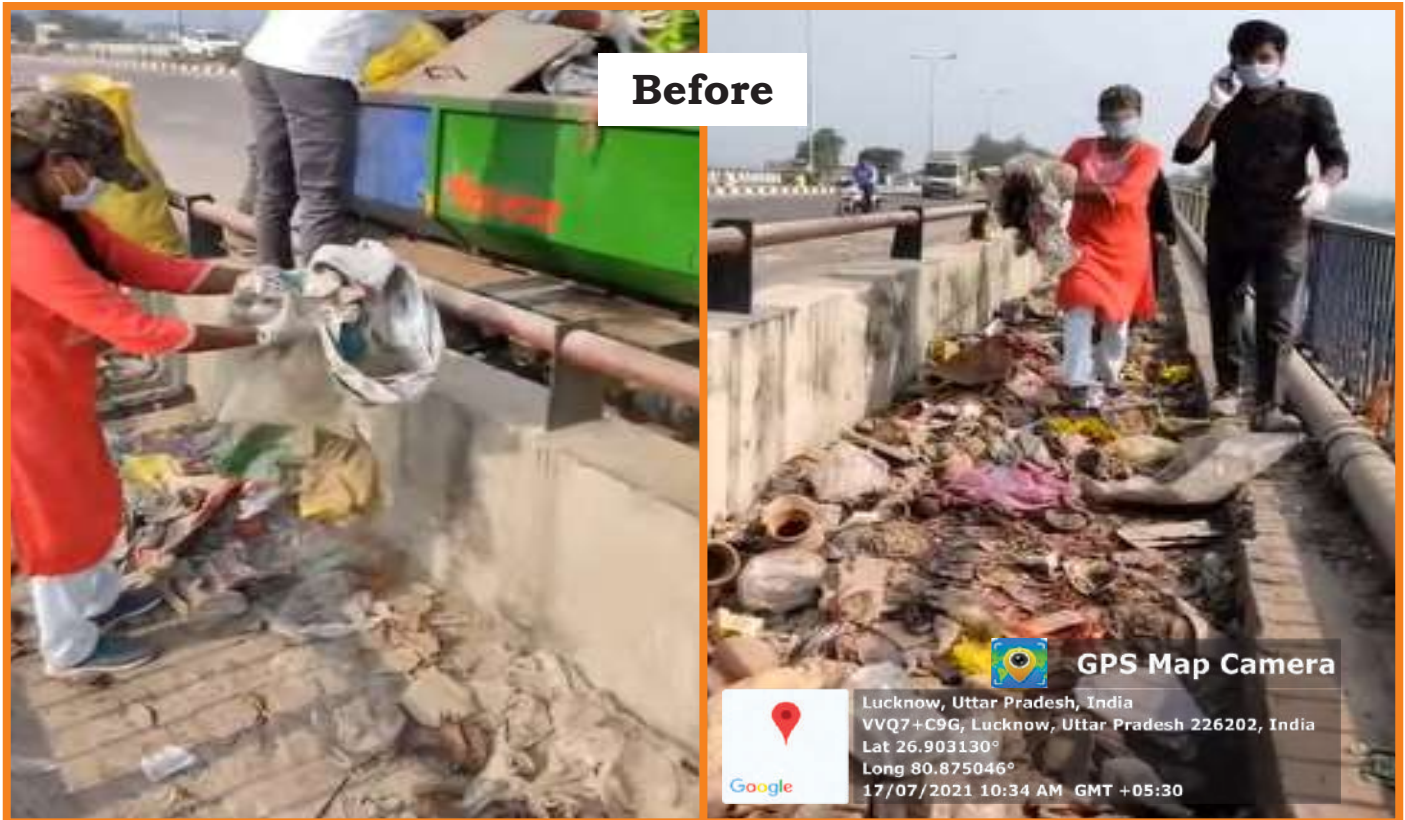
Students of the University watering and providing requisite support to saplings that have grown into small fruit and flower bearing trees due to their continues care in adopted village *Amisha* *Nagar*

REGISTRAR  
 KHWAJA MOINUDDIN CHISHTI  
 LANGUAGE UNIVERSITY,  
 LUCKNOW



# Awareness Drives for Government Schemes

## Activities conducted under the Swachh Bharat Mission



Cleanliness Drive run by NSS Volunteers of University in near River Gomti, Ghaila



A view of clean footpath after Cleanliness Drive in near River Gomti, Ghaila



# Awareness Drives for Government Schemes

## Activities conducted under the Swachh Bharat Mission



Cleanliness Campaign by NSS Volunteers of University in adopted village *Diguria*



Involvement of NCC Cadets in Swachhta Drive organised in Digurisha village *Jiamau*



# Awareness Drives for Government Schemes

## Awareness Campaigns conducted by the University in collaboration with NGOs



**Hon'ble Vice Chancellor Prof. N.B. Singh** distributing stationary kits in adopted village **Diguria** in programme organized for creating Educational awareness in collaboration with **NGO- Abhyudaya Sansthan**

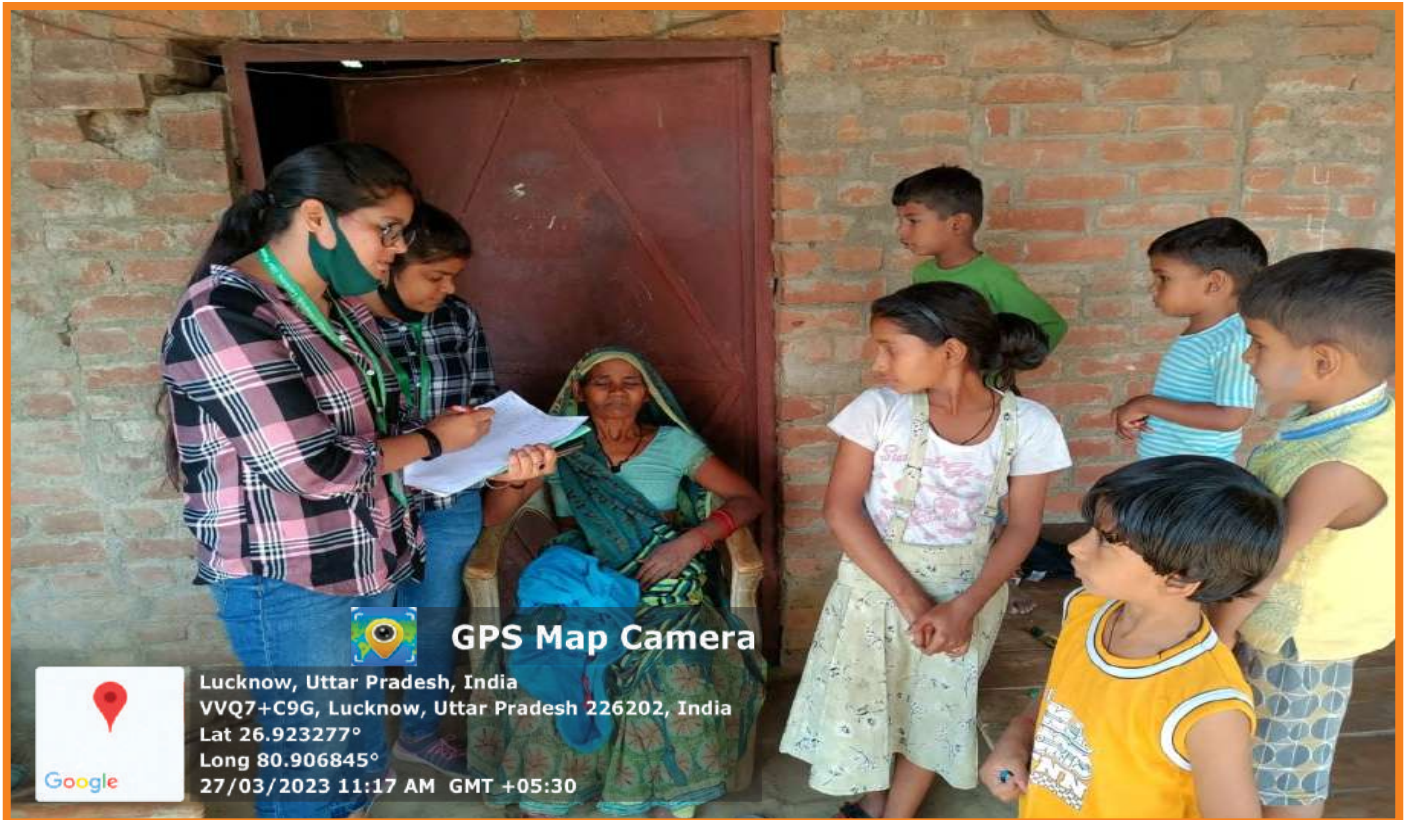


Faculty members actively involved in distribution of educational kits to children living in adopted village **Diguria**

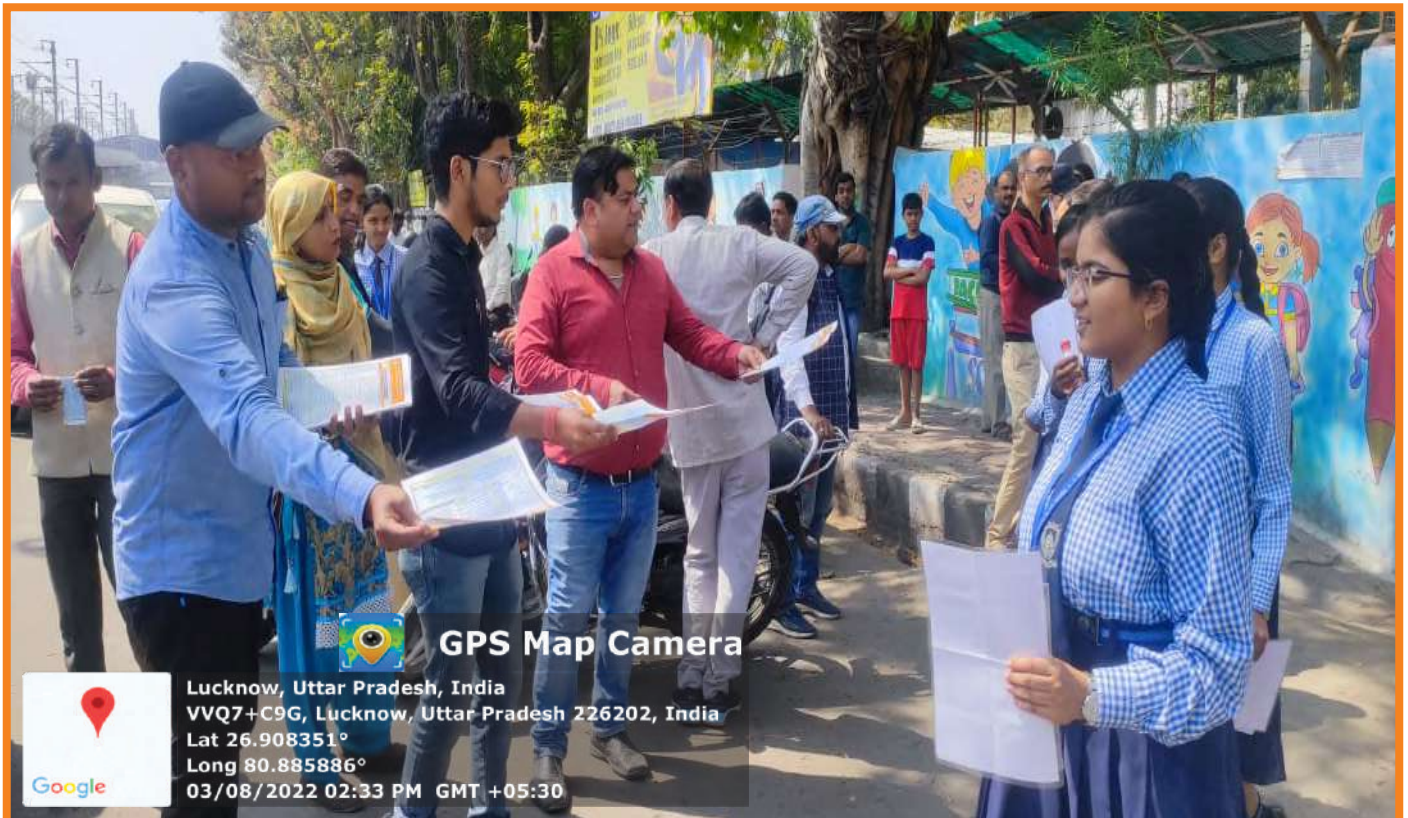


# Awareness Drives for Government Schemes

## Awareness Campaigns conducted by the University



Door to Door campaign on **Beti Bachao, Beti Padhao** Government Scheme in adopted village *Diguria*



Distribution of Pamphlets and brochures on **Atmanirbhar Bharat** Scheme in Secondary School, *Ghaila*, Lucknow

REGISTRAR  
KHWAJA MOINUDDIN CHISHTI  
LANGUAGE UNIVERSITY,  
LUCKNOW



# Awareness Drives for Government Schemes

## Awareness Campaigns conducted by the University



Volunteers of the University explaining the benefits of Government Policy **Ayushman Bharat Yojana** in adopted village *Lokharia*



Group counseling organized by the University volunteers to Brimsha explain the hazardous effects of clay stove and benefits of **Pradhan Mantri Ujjwala Yojana** in adopted village *Rahodapurua*

REGISTRAR  
KHWALA MOINUDDIN CHISHTI  
LANGUAGE UNIVERSITY,  
LUCKNOW



# Social Outreach Activities of SEWA

## Clothes and Saree Distribution



Distribution of woollen blankets to people living in adopted villages by family members of **Hon'ble Vice- Chancellor Prof. N.B. Singh**



Saree distribution under Saree Bank by University in Bmisha collaboration with an NGO *Women-led Science Society* in the adopted village *Diguria*

REGISTRAR  
KHWAJA MOINUDDIN CHISHTI  
LANGUAGE UNIVERSITY,  
LUCKNOW



# Social Outreach Activities of SEWA

## Mehndi Designing Activities in Adopted Villages



Mehndi workshop organised in the adopted village *Lokharia* by University volunteers for enhancing self reliance in women



Regular organization of Mehndi workshop in adopted villages for Amisha  
self empowerment of women through skill learning

REGISTRAR  
KHWAJA MOINUDDIN CHISHTI  
LANGUAGE UNIVERSITY,  
LUCKNOW



# Outcomes of SEWA

## Awareness Drives for Government Schemes



Students of University involved in Swachh Bharat Mission in adopted village *Lokharia*



Cleanliness Drive organized by the volunteers alongwith active Omisha participation of residents in adopted Village *Rahodapurwa*



## Outcomes of SEWA

### Awareness Drives for Government Schemes



Ayushman Card made under **Ayushman Bharat Yojna** after awareness given by the NSS Volunteers in adopted Village *Kakoli*



Ayushman Card made under **Ayushman Bharat Yojna** in *Bmisha*  
adopted Village *Allu Nagar, Diguria*



## Outcomes of SEWA Awareness Drives for Government Schemes



**Ankit Maurya, B.Ed. (2020-22)** has received **State level Vivekananda Youth Award 2021** for the exemplary social services by Yuwa Kalyan evam Prantiya Rakshak Dal Vibhaag, Uttar Pradesh.



# Outcomes of SEWA

## Awareness Drives for Government Schemes



### Accomplishments of Ankit Maurya (B.Ed. 2020-22):-

1. **Recipient of the UP's highest Youth Award** in the first batch of it's initiation by the Govt. Of UP, Dept. of Youth Welfare and PRD-State Vivekananda Youth Award conferred in 2021.
2. Has tracked, traced and moved out 120+ children from Child Labour and enrolled them in Govt. Primary Schools while working on a UNICEF project collaborated with ActionAid Association India.
3. Selected 5 times by the Ministry of Youth Affairs & Sports for representing UP in various National Camps - Adventure Camp, National Youth Festival 2014, 2015, 2016, 2019, 2020.
4. Has planted 2000+ saplings out of which 1900+ have grown into trees.
5. Co-Founder of Two NGOs-  
a. Youth Power Association based out of Maharajganj, UP and  
b. Anara Foundation based out of Lucknow.
6. Has supervised 10 Interns from the Tata Institute of Social Sciences Mumbai, Azim Premji University Bhopal, DDU Gorakhpur University, BHU.
7. Presently, working as Programme Manager Upkram Educational Foundation (NGO) in Sonbhadra, UP. He is involved in teaching children living in rural areas with direct intervention to 3000+ children in primary schools with less numbers of teachers.

*Bmisha*





# Outcomes of SEWA

## Awareness Drives for Government Schemes



One of our student **Sweta Srivastava**, B.Ed. (2020-22) is running an NGO "Women led Science Society" in Lucknow successfully which is contributing towards women empowerment remarkably



# Outcomes of SEWA

## Awareness Drives for Government Schemes



Hon'ble Vice Chancellor receiving the '**Community Champion**' award for 'exceptional contributions and meticulous efforts towards comprehensive changes in the society at large.' on behalf of the University



*Bmisha*  
REGISTRAR  
KHWAJA MOINUDDIN CHISHTI  
LANGUAGE UNIVERSITY,  
LUCKNOW